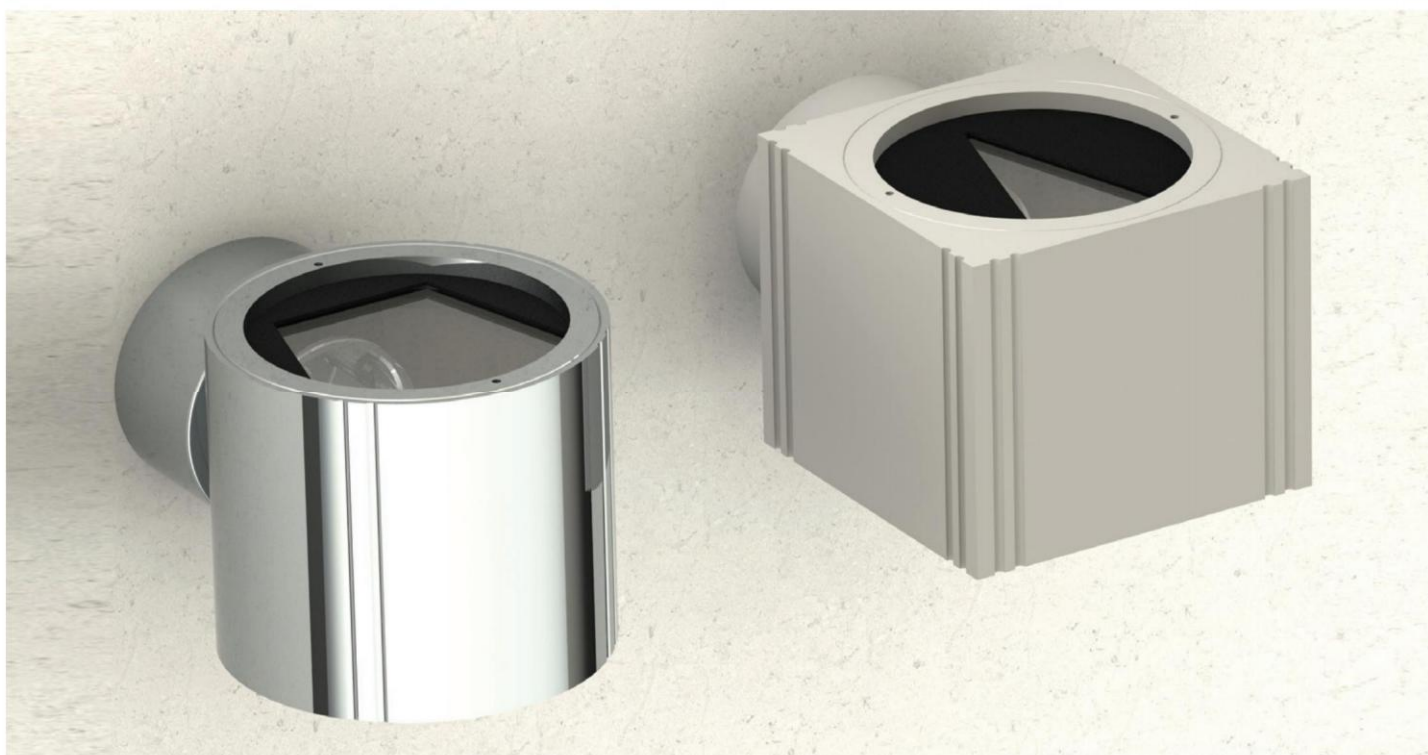


**BEAM 1 / BEAM 2 IP65**

Surface wall mounted luminaire with halogen or fluorescent lamps. It is ideal for a wide range of outdoor applications due to its high protection degree IP65. Available with one or two-way light distribution and with different beam angles.

**Technical Features**

- Aluminium body, painted electrostatically in selected colour.
- Die-cast aluminium lampholder - mounting base.
- Tempered protection glass.
- Silicone sealant.
- Beam-angle configuration diaphragm made of aluminium.

**Upon request**

Special beam editions.

BEAM 1 / BEAM 2 IP65

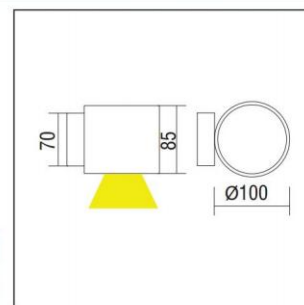
BEAM 1 - ONE WAY



|   |   |       |       |
|---|---|-------|-------|
| CE  | F | 850°C | IP 65 |
| <small>OSRAM HALOPHILIP PHILIPS CLOKLINE MEGAMAN CFL / G9</small> |   |       |       |

- For QT 14/G9 lamp.  
- Aluminium body.

| Code  | Description             | Kg    |
|-------|-------------------------|-------|
| 85727 | BEAM1 - ONE WAY G9 40°  | 0,950 |
| 85728 | BEAM1 - ONE WAY G9 100° | 0,950 |



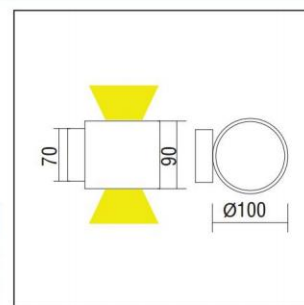
BEAM 1 - TWO WAY



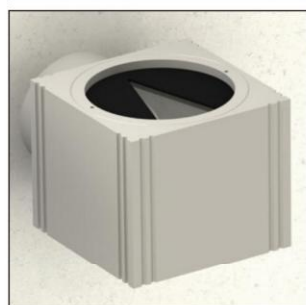
|   |   |       |       |
|---|---|-------|-------|
| CE  | F | 850°C | IP 65 |
| <small>OSRAM HALOPHILIP PHILIPS CLOKLINE MEGAMAN CFL / G9</small> |   |       |       |

- For QT 14/G9 lamp.  
- Aluminium body.

| Code  | Description                    | Kg    |
|-------|--------------------------------|-------|
| 85721 | BEAM1 - TWO WAY G9 40° / 100°  | 0,950 |
| 85722 | BEAM1 - TWO WAY G9 100° / 100° | 0,950 |
| 85723 | BEAM1 - TWO WAY G9 40° / 40°   | 0,950 |



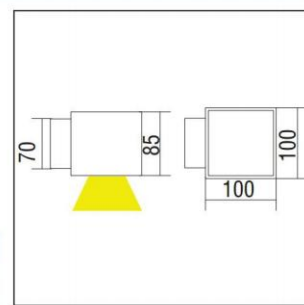
BEAM 2 - ONE WAY



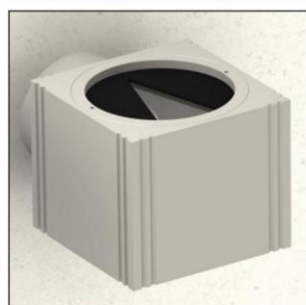
|   |   |       |       |
|---|---|-------|-------|
| CE  | F | 850°C | IP 65 |
| <small>OSRAM HALOPHILIP PHILIPS CLOKLINE MEGAMAN CFL / G9</small> |   |       |       |

- For QT 14/G9 lamp.  
- Aluminium body.

| Code  | Description             | Kg    |
|-------|-------------------------|-------|
| 85729 | BEAM2 - ONE WAY G9 40°  | 1,500 |
| 85730 | BEAM2 - ONE WAY G9 100° | 1,500 |



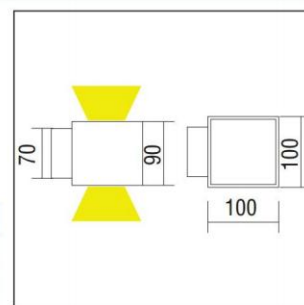
BEAM 2 - TWO WAY



|   |   |       |       |
|---|---|-------|-------|
| CE  | F | 850°C | IP 65 |
| <small>OSRAM HALOPHILIP PHILIPS CLOKLINE MEGAMAN CFL / G9</small> |   |       |       |

- For QT 14/G9 lamp.  
- Aluminium body.

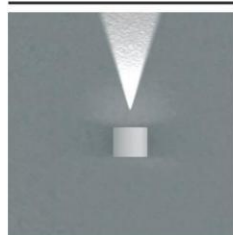
| Code  | Description                    | Kg    |
|-------|--------------------------------|-------|
| 85724 | BEAM2 - TWO WAY G9 40° / 100°  | 1,500 |
| 85725 | BEAM2 - TWO WAY G9 100° / 100° | 1,500 |
| 85726 | BEAM2 - TWO WAY G9 40° / 40°   | 1,500 |



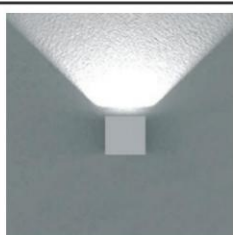
Versions

Colour Codes:

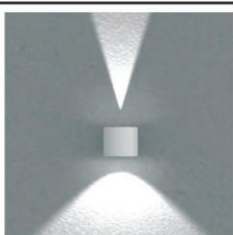
- 0 Colours 1 White 2 Titan 3 Black 4 Chrome



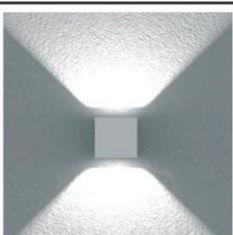
BEAM 1 - ONE WAY  
40°



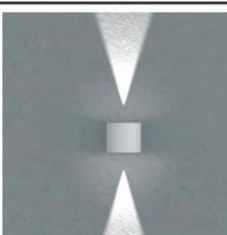
BEAM 2 - ONE WAY  
100°



BEAM 1 - TWO WAY  
40° / 100°



BEAM 2 - TWO WAY  
100° / 100°



BEAM 1 - TWO WAY  
40° / 40°



BEAM 1 / BEAM 2 IP65



BEAM 1 / BEAM 2 IP65

