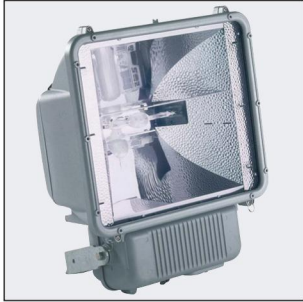


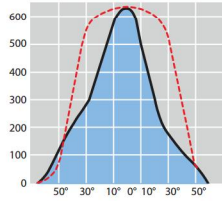
LIGHTMASTER 1000

LIGHTMASTER 1000 - Symmetrical

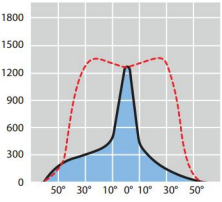
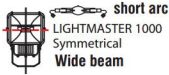


CE	F	IP 66	
HIT	HST	HIT-DE	HIT-DE
 OSRAM HD 1101 PHILIPS HI-T PLUS	 OSRAM NAV-T PHILIPS SON-T	 OSRAM HSL-TS / K12s-36	 PHILIPS MHN-LA / X528

- Symmetrical reflector (with baffle to avoid the direct glare), peened for medium-wide beam and specular for medium-narrow beam, from anodised high purity aluminum.



1000W HIT-DE / K12s-36



1000W HIT / E40



Code	Description	
<b>Wide beam</b>		
FA70836	FLOODLIGHT LIGHTMASTER 1000 SYM - HIT or HST /E40	70836 (empty with ignitor)
FA70512	FLOODLIGHT LIGHTMASTER 1000 SYM - K12s-36 Osram	70512 (empty with ignitor)
FA70518	FLOODLIGHT LIGHTMASTER 1000 SYM - X528 Philips	70518 (empty with ignitor)
<b>Narrow beam</b>		
FA70837	FLOODLIGHT LIGHTMASTER 1000 SYM - HIT or HST /E40	70837 (empty with ignitor)
FA70511	FLOODLIGHT LIGHTMASTER 1000 SYM - K12s-36 Osram	70511 (empty with ignitor)
FA70517	FLOODLIGHT LIGHTMASTER 1000 SYM - X528 Philips	70517 (empty with ignitor)

1000W HIT-DE / K12s-36: OSRAM (short arc) HQI-TS 1000/NDL/S, HQI-TS 1000/D/S  
 1000W HIT-DE / X528: PHILIPS (long arc) MHN-LA 1000W/842, MHN-LA 1000W/956

Note: The preceding luminaires are also available in **class II**.

