

**LUNA ORIENTABILE**

Luna Orientabile is an adjustable and extractable ceiling downlight for metal halide lamps. It highlights impressively premises, such as shopping malls, stores, hotels, exhibition halls, museums etc.

**Technical Features**

- Plaster trimless recessed luminaire.
- Installation frame from steel.
- Lamp placement in horizontal position.
- Control gear in a separate box.
- Connection for operation on 230V-50Hz with conventional ballast and power factor correction capacitor (lamp TC-D).
- Connection for operation on 230V-50/60Hz with electronic ballast (lamps TC-DEL).
- Connection for operation with electronic dimmable ballast (lamp TC-DEL).
- Connection for emergency lighting system (lamp TC-DEL).

LUNA ORIENTABLE

LUNA ORIENTABLE 170



CE F IP 23

60° 35° 1-12mm

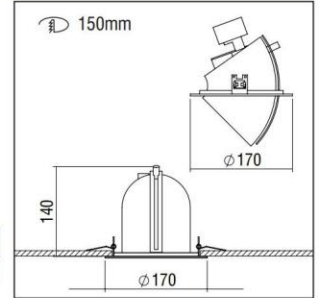
HIT-CE  
OSRAM HST-7  
PHILIPS COMET

CG

- Version for HIT-CE/G12.
- Die-cast aluminium body and ring.
- Matt aluminium reflector.
- Tempered protection silkscreen glass.

Code	Description	Kg
88115	1x35/70/150W HIT-CE/G12	0,750

Please order Control Gear separately



LUNA ORIENTABLE 230



CE F IP 23

60° 35° 1-12mm

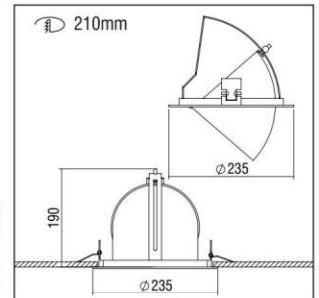
HIT-DE HST-DE  
OSRAM HD-TL, HD-TS  
PHILIPS BWH-TL, COM-TS  
OSRAM MAF-TS  
PHILIPS -

CG

- Version for HIT-DE, HST-DE/RX7s.
- Die-cast aluminium body and ring.
- Matt aluminium reflector.
- Tempered protection silkscreen glass.

Code	Description	Kg
88116	1x70W HIT-DE, HST-DE/RX7s	1,200
88117	1x150W HIT-DE, HST-DE/RX7s	1,200

Please order Control Gear separately



Colour Codes:

- 1 White 2 Titan

CONTROL GEAR - TRANSFORMERS

DESCRIPTION	TYPE	Conventional Control Gear & Capacitor		Electronic Control Gear	
		CODE		CODE	
Metal halide lamps (HIT) or high pressure sodium lamps (HST)					
35W HIT AVO	CONTROL GEAR	498222		498223	
70W HIT - HST Display	CONTROL GEAR	498312		498323	
70W HIT - HST (for lum. AVO - TEO)	CONTROL GEAR	498322			
150W HIT - HST	CONTROL GEAR	498612		498623	