

HIGH SYSTEM / LOW SYSTEM

This luminaire combines the architectural style with the efficiency. It produces perfect lighting conditions without annoying reflections and that is why it can be used from entrance areas to offices.

Uniformly illuminated lines with no dark shadows can be created thanks to the Seamless version of T16 lamps. The LED version escapes the restrictions of the T16 lamp by using LED lighting points that can have any spacing pitch and this gives the light line enormous flexibility.

The visual benefit: The continuous-row system is illuminated absolutely uniformly from beginning to end, is economically efficient, is maintenance-free and it has long service life.

Technical Features

- Housing from aluminium profile, painted electrostatically in selected colour.
- Removable plastic heads.
- High efficient diffuser in opal PMMA.
- Flow recuperator in white colour.

Upon request

- Connection for operation with electronic dimmable ballast.
- Available in IP54 protection version.

For LED Version

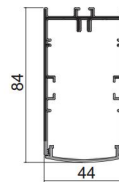
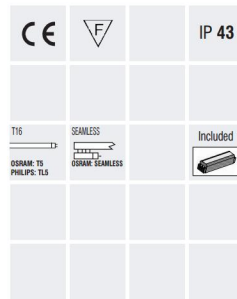
- Pure light without IR/UV radiation.
- Efficient thermal management.
- Up to 27W/m and 3620 Lm luminous flux range.
- Operation life: 50,000 hours with efficiency > 70% of the initial luminous flux.
- Connection for operation on 230V/50Hz.

Upon request:

- Available with highest colour rendering index (CRI).
- Available in IP54 protection version.

HIGH SYSTEM / LOW SYSTEM

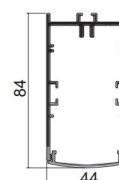
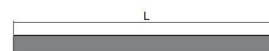
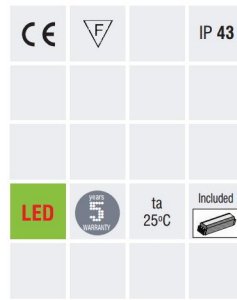
HIGH SYSTEM



- Version for T16 and T16 SEAMLESS.
- Aluminium body.
- Removable plastic heads.
- High efficient diffuser in opal PMMA.
- Flow recuperator in white colour.
- Suspension and power supply not included.

Code	Description	L	Kg
96101	High System 1x13/14W T16	595	1,250
96103	High System 1x20/24W T16	595	1,250
96105	High System 1x19/21W T16	895	1,820
96107	High System 1x34/39W T16	895	1,820
96109	High System 1x25/28W T16	1195	2,200
96111	High System 1x50/54W T16	1195	2,200
96113	High System 1x32/35W T16	1495	2,950
96115	High System 1x45/49W T16	1495	2,950
96137	High System 1x14W T16 Seamless	595	1,150
96139	High System 1x24W T16 Seamless	595	1,150
96141	High System 1x21W T16 Seamless	895	1,680
96143	High System 1x39W T16 Seamless	895	1,680
96145	High System 1x28W T16 Seamless	1195	2,200
96147	High System 1x54W T16 Seamless	1195	2,200
96153	High System 1+1x21W T16 Seamless	1785	3,700
96155	High System 1+1x39W T16 Seamless	1785	3,700
96157	High System 1+1x28W T16 Seamless	2385	4,400
96159	High System 1+1x54W T16 Seamless	2385	4,400

HIGH SYSTEM LED



- Version for LED CHIP.
- Aluminium body.
- Removable plastic heads.
- High efficient diffuser in opal PMMA.
- Flow recuperator in white colour.
- Suspension and power supply not included.
- Efficiency: 145 Lumen / Watt.

Code	Description	L	Kg
96173	High System Led 15W 2170 lm Neutral	595	1,500
96174	High System Led 23W 3260 lm Neutral	875	2,100
96175	High System Led 30W 4340 lm Neutral	1155	2,500
96176	High System Led 38W 5430 lm Neutral	1435	3,200
96177	High System Led 15W 1990 lm Warm	595	1,500
96178	High System Led 23W 2990 lm Warm	875	2,100
96179	High System Led 30W 3980 lm Warm	1155	2,500
96180	High System Led 38W 4980 lm Warm	1435	3,200

Colour Codes:

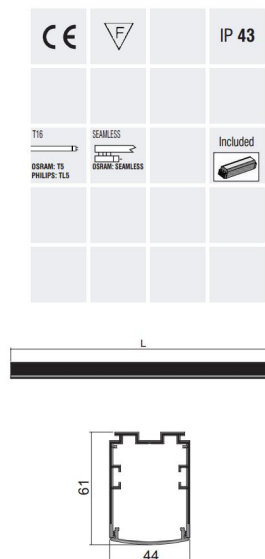
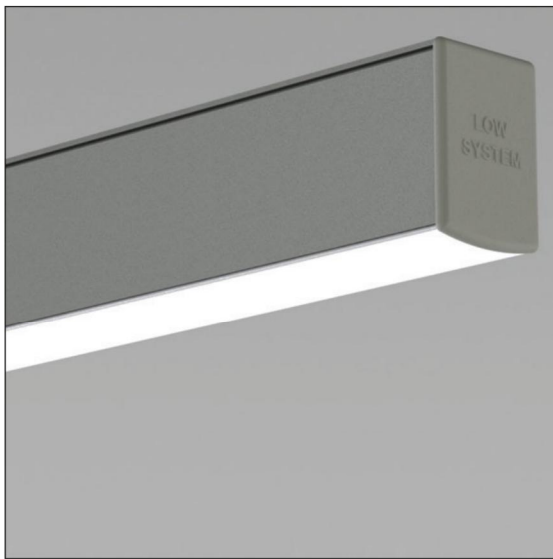
- 0 Colours 1 White 2 Titan 3 Black 5 matt Alum.





HIGH SYSTEM / LOW SYSTEM

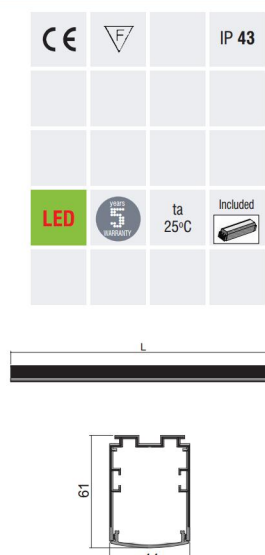
LOW SYSTEM



- Version for T16 and T16 SEAMLESS.
- Aluminium body.
- Removable plastic heads.
- High efficient diffuser in opal PMMA.
- Flow recuperator in white colour.
- Suspension and power supply not included.

Code	Description	L	Kg
97501	Low System 1x13/14W T16	595	1,100
97503	Low System 1x20/24W T16	595	1,100
97505	Low System 1x19/21W T16	895	1,300
97507	Low System 1x34/39W T16	895	1,300
97509	Low System 1x25/28W T16	1195	1,980
97511	Low System 1x50/54W T16	1195	1,980
97513	Low System 1x32/35W T16	1495	2,400
97515	Low System 1x45/49W T16	1495	2,400
97537	Low System 1x14W T16 Seamless	595	1,000
97539	Low System 1x24W T16 Seamless	595	1,000
97541	Low System 1x21W T16 Seamless	895	1,550
97543	Low System 1x39W T16 Seamless	895	1,550
97545	Low System 1x28W T16 Seamless	1195	2,000
97547	Low System 1x54W T16 Seamless	1195	2,000
97553	Low System 1+1x21W T16 Seamless	1785	2,970
97555	Low System 1+1x39W T16 Seamless	1785	2,970
97557	Low System 1+1x28W T16 Seamless	2385	3,500
97559	Low System 1+1x54W T16 Seamless	2385	3,500

LOW SYSTEM LED



- Version for LED CHIP.
- Aluminium body.
- Removable plastic heads.
- High efficient diffuser in opal PMMA.
- Flow recuperator in white colour.
- Suspension and power supply not included.
- Efficiency: 145 Lumen / Watt.

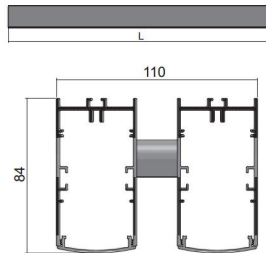
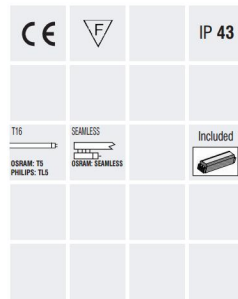
Code	Description	L	Kg
97573	Low System Led 15W 2170 lm Neutral	595	1,300
97574	Low System Led 23W 3260 lm Neutral	875	1,600
97575	Low System Led 30W 4340 lm Neutral	1155	2,200
97576	Low System Led 38W 5430 lm Neutral	1435	2,600
97577	Low System Led 15W 1990 lm Warm	595	1,300
97578	Low System Led 23W 2990 lm Warm	875	1,600
97579	Low System Led 30W 3980 lm Warm	1155	2,200
97580	Low System Led 38W 4980 lm Warm	1435	2,600

Colour Codes:

- 0 Colours 1 White 2 Titan 3 Black 5 matt Alum.

HIGH SYSTEM DOUBLE

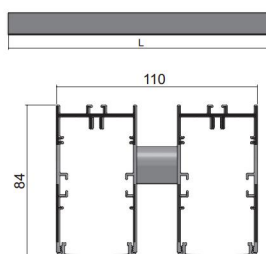
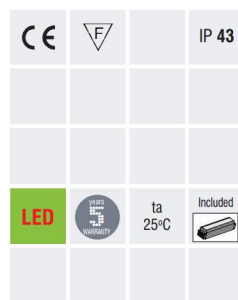
HIGH SYSTEM DOUBLE



- Version for T16 and T16 SEAMLESS.
- Aluminium body.
- Removable plastic heads.
- High efficient diffuser in opal PMMA.
- Flow recuperator in white colour.
- Suspension and power supply not included.

Code	Description	L	Kg
96405	High System Double 2x19/21W T16	895	4,000
96407	High System Double 2x34/39W T16	895	4,000
96409	High System Double 2x25/28W T16	1195	4,750
96411	High System Double 2x50/54W T16	1195	4,750
96413	High System Double 2x32/35W T16	1495	5,750
96415	High System Double 2x45/49W T16	1495	5,750
96423	High System Double 2x21W T16 Seamless	895	4,000
96425	High System Double 2x39W T16 Seamless	895	4,000
96427	High System Double 2x28W T16 Seamless	1195	4,750
96429	High System Double 2x54W T16 Seamless	1195	4,750

HIGH SYSTEM DOUBLE LED



- Version for LED CHIP.
- Aluminium body.
- Removable plastic heads.
- High efficient diffuser in opal PMMA.
- Flow recuperator in white colour.
- Suspension and power supply not included.
- Efficiency: 145 Lumen / Watt.

Code	Description	L	Kg
96474	High System Double Led 2x23W 2x3260 lm Neutral	875	4,200
96475	High System Double Led 2x30W 2x4340 lm Neutral	1155	5,000
96476	High System Double Led 2x38W 2x5430 lm Neutral	1435	6,000
96478	High System Double Led 2x23W 2x2990 lm Warm	875	4,200
96479	High System Double Led 2x30W 2x3980 lm Warm	1155	5,000
96480	High System Double Led 2x38W 2x4980 lm Warm	1435	6,000

Colour Codes:

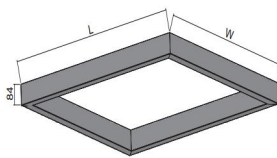
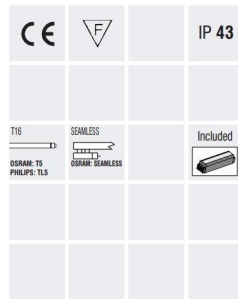
- 0 Colours 1 White 2 Titan 3 Black 5 matt Alum.





HIGH SYSTEM / LOW SYSTEM

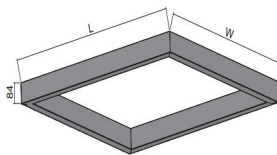
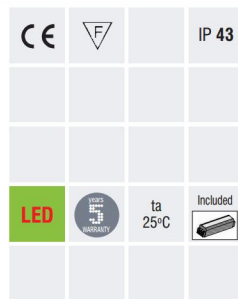
HIGH SYSTEM SQUARE



- Version for T16 and T16 SEAMLESS.
- Aluminium body.
- High efficient diffuser in opal PMMA.
- Flow recuperator in white colour.
- Suspension and power supply not included.

Code	Description	W	L	Kg
96501	High System Square 4x14W T16 SLS	640	640	4,500
96503	High System Square 4x24W T16 SLS	640	640	4,500
96505	High System Square 4x21W T16 SLS	940	940	6,200
96507	High System Square 4x39W T16 SLS	940	940	6,200
96509	High System Square 4x28W T16 SLS	1240	1240	7,900
96511	High System Square 4x54W T16 SLS	1240	1240	7,900
96513	High System Square 2x14W+2x21W T16 SLS	640	940	6,200
96515	High System Square 2x14W+2x28W T16 SLS	640	1240	7,900
96517	High System Square 2x21W+2x28W T16 SLS	940	1240	7,900
96519	High System Square 2x24W+2x39W T16 SLS	640	940	6,200
96521	High System Square 2x24W+2x54W T16 SLS	640	1240	7,900
96523	High System Square 2x39W+2x54W T16 SLS	940	1240	7,900

HIGH SYSTEM SQUARE LED



- Version for LED CHIP.
- Aluminium body.
- Removable plastic heads.
- High efficient diffuser in opal PMMA.
- Flow recuperator in white colour.
- Suspension and power supply not included.
- Efficiency: 145 Lumen / Watt.

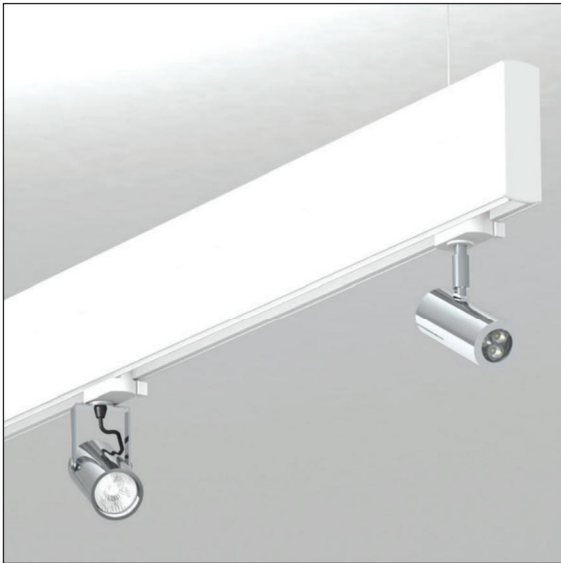
Code	Description	W	L	Kg
96573	High System Square Led 4x23W 13040 lm Neutral	900	900	5,800
96574	High System Square Led 4x30W 17360 lm Neutral	1180	1180	7,650
96575	High System Square Led 4x38W 21720 lm Neutral	1460	1460	8,400
96576	High System Square Led 4x23W 11960 lm Warm	900	900	5,800
96577	High System Square Led 4x30W 15920 lm Warm	1180	1180	7,650
96578	High System Square Led 4x38W 19920 lm Warm	1460	1460	8,400

Colour Codes:

- 0 Colours 1 White 2 Titan 3 Black 5 matt Alum.

HIGH - LOW SYSTEM

HIGH - LOW SYSTEM UP / DOWN



CE	F	IP 20
T16	SEAMLESS	Included
OSRAM: T5 PHILIPS: T5	OSRAM: SEAMLESS PHILIPS: SEAMLESS	

- Version for T16 and T16 SEAMLESS.
- Aluminium body.
- High efficient diffuser in opal PMMA.
- Flow recuperator in white colour.
- Suspension and power supply included.

Code	Description	L	Kg
98601	High-Low System 1x25/28W T16+1x19/21W T16	1195	4,100
98602	High-Low System 1x50/54W T16+1x34/39W T16	1195	4,100
98605	High-Low System 1x32/35W T16+1x25/28W T16	1495	4,500
98603	High-Low System 1x28W T16 SLS+1x21W T16	1195	4,100
98604	High-Low System 1x54W T16 SLS+1x39W T16	1195	4,100
98607	High-Low System 2x28W T16 SLS+2x21W T16	2385	7,400
98608	High-Low System 2x54W T16 SLS+2x39W T16	2385	7,400
98615	High-Low System Track 3-phase+1x25/28W T16	1495	4,500
98616	High-Low System Track 3-phase+1x50/54W T16	1495	4,500
98617	High-Low System Track 3-phase+1x32/35W T16	1795	5,200
98619	High-Low System Track 3-phase+2x19/21W T16	2080	6,500
98620	High-Low System Track 3-phase+2x34/39W T16	2080	6,500
98621	High-Low System Track 3-phase+2x25/28W T16	2680	7,650
98622	High-Low System Track 3-phase+2x50/54W T16	2680	7,650

HIGH - LOW SYSTEM UP / DOWN LED



CE	F	IP 20
LED	100% GUARANTEED	Included
ta 25°C		

- Version for LED CHIP.
- Aluminium body.
- Removable plastic heads.
- High efficient diffuser in opal PMMA.
- Flow recuperator in white colour.
- Suspension and power supply included.
- Efficiency: 145 Lumen / Watt.

Code	Description	L	Kg
98673	High-Low System Led 23W+15W Neutral	875	3,700
98674	High-Low System Led 30W+23W Neutral	1155	4,700
98675	High-Low System Led 38W+30W Neutral	1435	5,500
98676	High-Low System Led 23W+15W Warm	875	3,700
98677	High-Low System Led 30W+23W Warm	1155	4,700
98678	High-Low System Led 38W+30W Warm	1435	5,500
98679	High-Low System Track 3-phase+15W Neutral	875	3,700
98680	High-Low System Track 3-phase+23W Neutral	1155	4,050
98681	High-Low System Track 3-phase+30W Neutral	1435	4,200
98682	High-Low System Track 3-phase+15W Warm	875	3,700
98683	High-Low System Track 3-phase+23W Warm	1155	4,050
98684	High-Low System Track 3-phase+30W Warm	1435	4,200

Colour Codes:

- 0 Colours 1 White 2 Titan 3 Black 5 matt Alum.



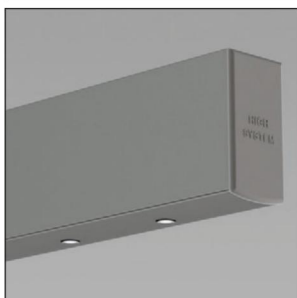


Η ΠΡΩΤΟΓΕΝΗΣ ΠΑΡΑΓΩΓΗ
ΠΑΠΑΔΟΠΟΥΛΟΥ
ΜΕΤΕΠΕΜΜΑΤΙΚΟ
ΕΣΤΙΟ
3,99.
ΣΑΡΜΕΣ
3.99

0.38

HIGH SYSTEM / LOW SYSTEM

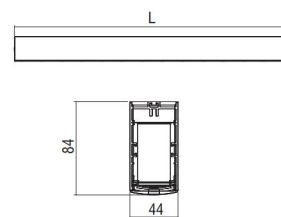
HIGH SYSTEM ASTRA LED



CE	EF	IP 20
LED	5 YEAR WARRANTY	ta 25°C
		Included

- Version for LED CHIP.
- Aluminium body.
- Removable plastic heads.
- Suspension and power supply not included.
- Efficiency: 107 Lumen / Watt.

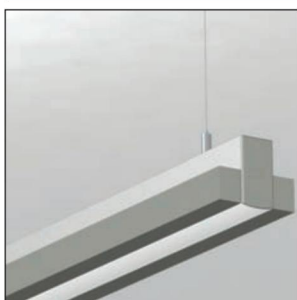
Code	Description	L	Kg
96201	High System Astra Led 6x1W Neutral	560	1,500
96202	High System Astra Led 12x1W Neutral	1060	2,000
96203	High System Astra Led 18x1W Neutral	1560	2,500
96205	High System Astra Led 6x1W Warm	560	1,500
96206	High System Astra Led 12x1W Warm	1060	2,000
96207	High System Astra Led 18x1W Warm	1560	2,500
96209	High System Astra Led 6x2W Neutral	560	1,500
96210	High System Astra Led 12x2W Neutral	1060	2,000
96211	High System Astra Led 18x2W Neutral	1560	2,500
96213	High System Astra Led 6x2W Warm	560	1,500
96214	High System Astra Led 12x2W Warm	1060	2,000
96215	High System Astra Led 18x2W Warm	1560	2,500



Colour Codes:

- 0 Colours 1 White 2 Titan 3 Black 5 matt Alum.

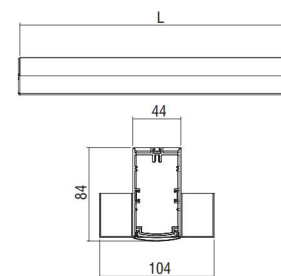
HIGH SYSTEM UP/DOWN SIDE



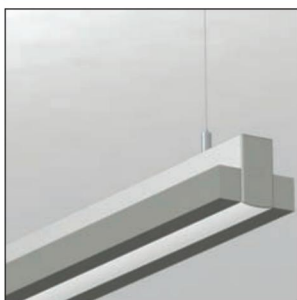
CE	EF	IP 20
T16	OSRAM T5 PHILIPS T16	Included

- Version for T16.
- Aluminium body.
- High efficient diffuser in opal PMMA.
- Flow recuperator in white colour.
- Suspension and power supply included.

Code	Description	L	Kg
96221	High System Up/Down Side 1x50/54W+2x25/28W T16	1195	5,400
96222	High System Up/Down Side 1x73/80W+2x32/35W T16	1495	6,100



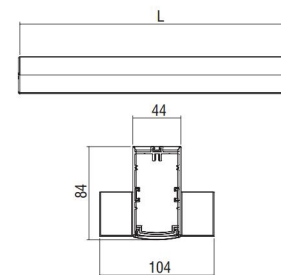
HIGH SYSTEM UP/DOWN SIDE LED



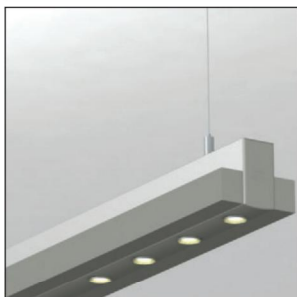
CE	EF	IP 20
T16	OSRAM T5 PHILIPS T16	Included
LED	5 YEAR WARRANTY	ta 25°C

- Version for LED and T16.
- Aluminium body.
- High efficient diffuser in opal PMMA.
- Flow recuperator in white colour.
- Suspension and power supply included.
- Efficiency: 145 Lumen / Watt.

Code	Description	L	Kg
96226	High System Up/Down Led 30W Led+2x25/28W T16 Neutral	1195	5,400
96227	High System Up/Down Led 38W Led+2x32/35W T16 Neutral	1495	6,100
96228	High System Up/Down Led 30W Led+2x25/28W T16 Warm	1195	5,400
96229	High System Up/Down Led 38W Led+2x32/35W T16 Warm	1495	6,100



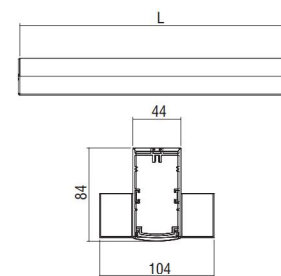
HIGH SYSTEM UP/DOWN SIDE LED SPOT



CE	EF	IP 20
LED	5 YEAR WARRANTY	ta 25°C
		Included

- Version for LED and T16.
- Aluminium body.
- Suspension and power supply included.
- Efficiency: 107 Lumen / Watt.

Code	Description	L	Kg
96235	High System Up/Down Led Spot 6x2W Led+2x25/28W T16 Neutral	1195	5,400
96236	High System Up/Down Led Spot 8x2W Led+2x32/35W T16 Neutral	1495	6,100
96237	High System Up/Down Led Spot 6x2W Led+2x25/28W T16 Warm	1195	5,400
96238	High System Up/Down Led Spot 8x2W Led+2x32/35W T16 Warm	1495	6,100

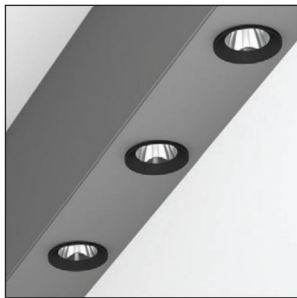
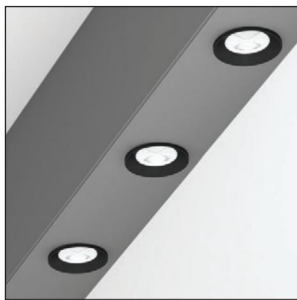


Colour Codes:

- 0 Colours 1 White 2 Titan 3 Black

HIGH SYSTEM / LOW SYSTEM

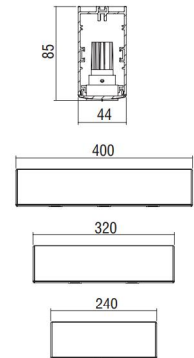
HIGH SYSTEM + Module 30



CE	F	IP 20
0°	0°	
LED	ta 25°C	Included

- Version for LED CHIP.
- Aluminium body.
- Lens in Spot, Medium, Wide or spot reflector selection.
- Efficiency: 107 Lumen / Watt.

Code	Description	L	Kg
96301	High System Module 30 1x2W Lens	240	1,800
96302	High System Module 30 2x2W Lens	320	2,100
96303	High System Module 30 3x2W Lens	400	4,000
96304	High System Module 30 1x2W Reflector	240	1,800
96305	High System Module 30 2x2W Reflector	320	2,100
96306	High System Module 30 3x2W Reflector	400	4,000



LED COLOUR CODES:

2 Warm 3 Neutral

BEAM CODES:

01 spot 02 medium 03 wide

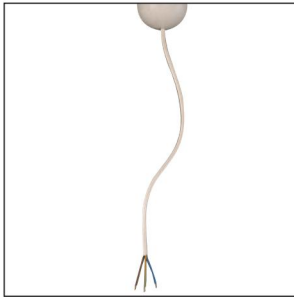
Colour Codes:

0 Colours 1 White 2 Titan 3 Black 5 matt Alum.



HIGH SYSTEM / LOW SYSTEM ACCESSORIES

POWER SUPPLY



CE			

- For pendant use.
- Plastic body.
- With transparent cable 3x0,75mm².
- Round version.

Code	Description	L	Kg
900121	Power Supply with Rosette Ø75	500	0,060
900122	Power Supply with Rosette Ø75	1000	0,120
900123	Power Supply with Rosette Ø75	1500	0,180
900124	Power Supply with Rosette Ø75	2000	0,240
900126	Power Supply with Rosette Ø75	3000	0,360

POWER SUPPLY



CE			

- For pendant use.
- Body from aluminium profile.
- With 2m transparent cable 3x0,75mm².
- Square or round version.

Code	Description	Kg
90042	Power Supply L 2m with Rosette Ø80	0,130
90043	Power Supply L 2m with Rosette Ø70	0,130
90044	Power Supply L 2m with Rosette 80x80	0,210
90045	Power Supply L 2m with Rosette 70x70	0,200



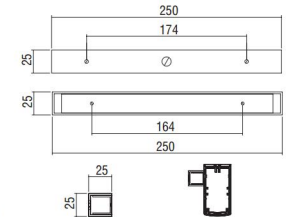
SCONCE BASE



CE			

- For simple applique version.
- Body from aluminium profile.
- **Required:**
1 base for length <or = 1650mm &
2 bases for length > 1650mm

Code	Description	Kg
90041	Sconce Base	0,120



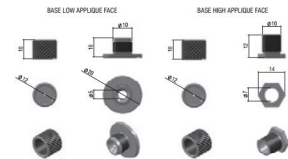
SURFACE SCONCE BASE



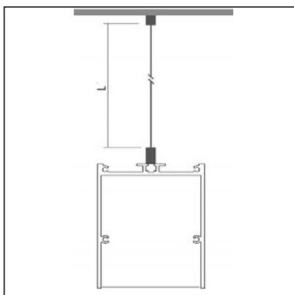
CE			

- For surface applique version.
- Body from aluminium.

Code	Description	Kg
900460	Surface Sconce Base Low (set 2 pcs.)	0,080
900470	Surface Sconce Base High (set 2 pcs.)	0,080



SINGLE ADJUSTABLE SUSPENSION



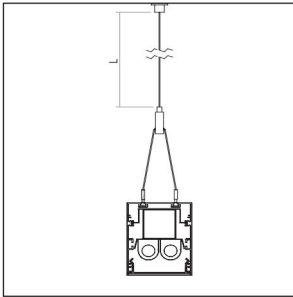
CE			

- Stainless steel cable and regulators.
- **Required:**
2 pieces for up to 3m profile.

Code	Description	L	Kg
900111	Single Suspension	500	0,050
900112	Single Suspension	1000	0,100
900113	Single Suspension	1500	0,150
900114	Single Suspension	2000	0,200
900116	Single Suspension	3000	0,300

HIGH SYSTEM / LOW SYSTEM

SURFACE SCONCE BASE



CE

- Stainless steel cable and regulators.
- **Required:**
2 pieces for up to 3m profile.

Code	Description	L	Kg
900142	Double Suspension	1000	0,070
900143	Double Suspension	1500	0,110
900144	Double Suspension	2000	0,220

Colour Codes:

0 Colours 1 White 2 Titan 3 Black 5 matt Alum.

