

SERIES 760-BATTEN

Industrial dust- and waterproof batten luminaires

With 1 and 2 fluorescent tubes for T5 or T8 lamps or with LED-tubes



YOUR MAIN BENEFITS:

Our batten is made for professionals.

Full range available in T8, T5, LED-tube, IP 65



760 - BATTEN

FIELD OF APPLICATION:

Due to the gasketed fixtures, our batten luminaires ensure high grade of protection (IP 65) against dust, contamination and water penetration. In accordance with their IP grade, they can be used widely to illuminate spaces with dusty, humid environment.

When using outdoors, the luminaires should be protected against direct sunlight and adverse weather conditions.

TECHNICAL DESCRIPTION AND BENEFITS:

- **Housing and cover:** These are made of flame retardant glass-fibre reinforced polyester (on request suitable for 850°C glow wire test too), in light grey (RAL7035) colour. This material has very good temperature resistance and mechanical stability, furthermore it is a good electrical insulator, it resists the impacts of several chemicals and the impacts of weather conditions. Its stability of size and shape at changing temperatures is excellent. The housing and cover are fastened to each other with a normal bolt and nut.
- The **gasket** between the housing and cover is ensured by anti-aging PU (polyurethane) foam or EPDM rubber (on request).
- **Reflector:** As an option glossy aluminium reflector or oval turnable protection tubes with internal anodized aluminium mirror reflector can be ordered. Following accessories are available as well: PC or glass protecting tubes, protection grids, white powder coated steel reflector.
- **Ways of installing:** direct onto the ceiling or suspended on chains.
- **Electrical components:** in accordance with the requested specification: LED-tubes, low power factor, high power factor or electronic control gear.

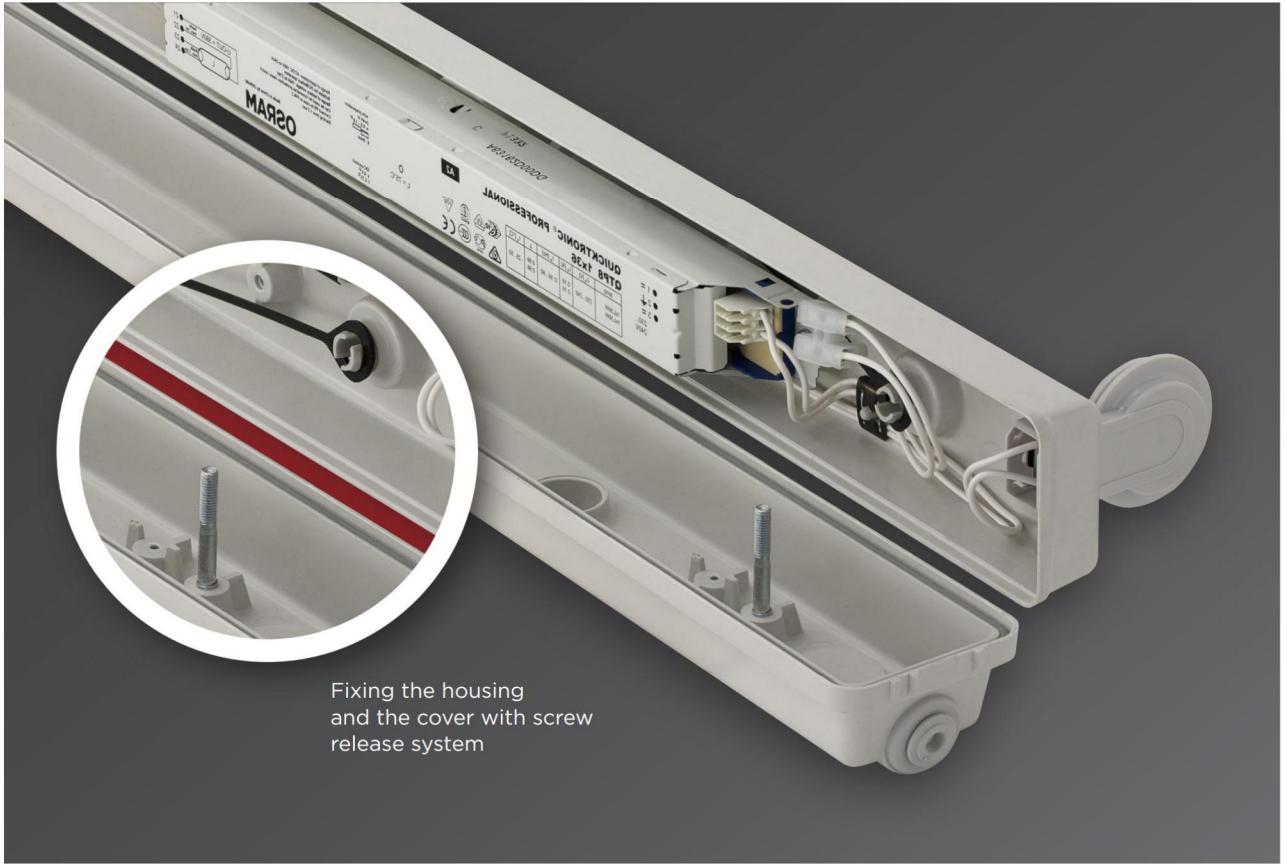
IP65



Main technical options



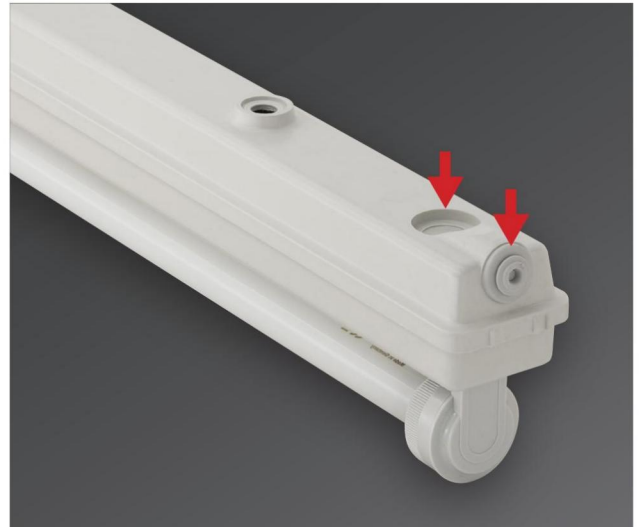
Equipped with protecting grid



Fixing the housing and the cover with screw release system



Turnable oval protective tube with mirror reflector



Several possibilities for cable entry



White powder coated steel sheet reflector



Batten luminaire with Retrofit LED tubes in IP 65. More information on LED-products see in LED-part of the catalogue.



Glossy aluminium reflector



Equipped with protecting tube

Further options:

- LED
- dimmable ballast
- protection class II
- through wiring
- halogen-free wiring

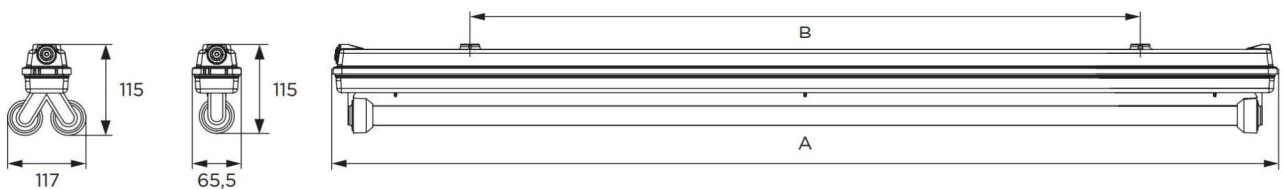
760 - BATTEN



Technical Data

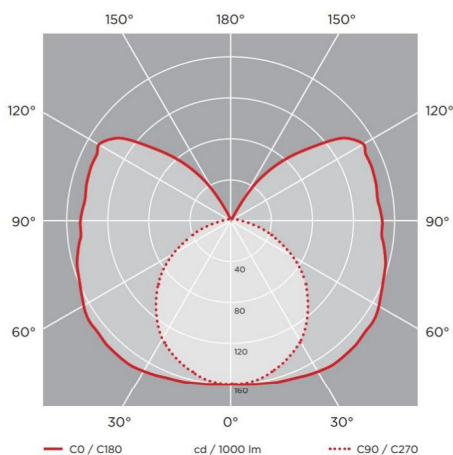
Type	Tube/Lampholder	Power (W)	Dimensions A	(mm) B	Weight (kg)
With B2 magnetic ballast for T8 fluorescent tubes					
760 118 IND	T8/G13	1 x 18	661	320	1,29
760 136 IND	T8/G13	1 x 36	1 271	900	1,73
760 158 IND	T8/G13	1 x 58	1 571	900	2,51
760 218 IND	T8/G13	2 x 18	661	320	1,37
760 236 IND	T8/G13	2 x 36	1 271	900	2,44
760 258 IND	T8/G13	2 x 58	1 571	900	3,74
With electronic control gear for T8 fluorescent tubes					
760 118 EVG	T8/G13	1 x 18	661	320	0,88
760 136 EVG	T8/G13	1 x 36	1 271	900	1,36
760 158 EVG	T8/G13	1 x 58	1 571	900	1,68
760 218 EVG	T8/G13	2 x 18	661	320	1,22
760 236 EVG	T8/G13	2 x 36	1 271	900	2,19
760 258 EVG	T8/G13	2 x 58	1 571	900	1,93
With electronic control gear for T5 HO fluorescent tubes					
760 124 EVG	T5/G5	1 x 24	661	320	0,96
760 154 EVG	T5/G5	1 x 54	1 271	900	1,41
760 180 EVG	T5/G5	1 x 80	1 571	900	1,74
760 224 EVG	T5/G5	2 x 24	661	320	1,09
760 254 EVG	T5/G5	2 x 54	1 271	900	1,66
760 280 EVG	T5/G5	2 x 80	1 571	900	2,01

Schematic drawing with main dimensions:



Photometric curves:

760-Batten 1x18



760-Batten 2x18

