

# 742-TRANSPARENT

## Industrial dust- and waterproof luminaires

For 1 fluorescent tube for T8 lamps

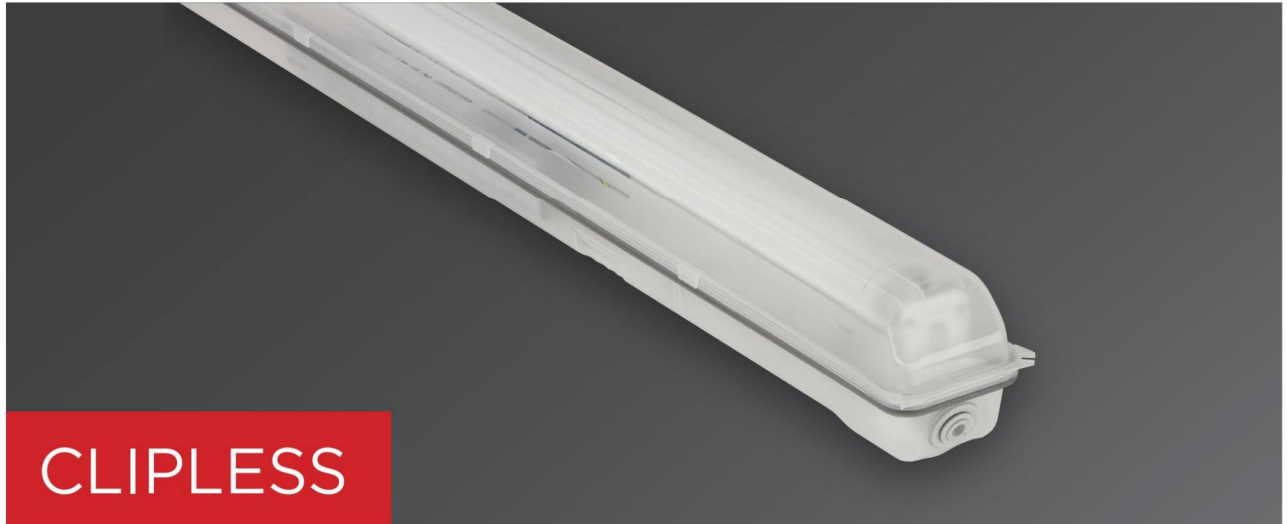


### YOUR MAIN BENEFITS:

Clipless luminaire in IP 65 with **transparent** housing.  
High quality for unbeatable price.

**Available** in 1x36 version, IP 65

742-TRANSPARENT



IP65



### FIELD OF APPLICATION:

Thanks to the construction principles of gasket, closing system and diffuser our fixtures ensure a high grade of protection (IP 65) against dust, contamination and water permeation. In accordance with their IP grade they can be widely used to illuminate spaces with dusty, humid environment in the most economical way.

In order to reach the optimal cost-performance ratio the 742-Transparent has been developed without gear tray. The electrical components are mounted directly into the housing.

742-Transparent is suitable for indoor applications.

### TECHNICAL DESCRIPTION AND BENEFITS:

- **Housing and diffuser:** Both are made of moisture, UV- and temperature resistant polypropylene (PP) in light opalescent colour.  
Main advantages: The optically designed opalescent diffusers are made with photo etching and are UV resistant.
- The **gasket** between the diffuser and housing is made of non-aging PU (polyurethane) foam.
- **Fixing of the diffuser to the body:** with unique clipless solution
- **Way of installing:** with suspension brackets onto the ceiling.
- **Electrical components:** in accordance with the requested specification: low power factor (magnetic ballast) or electronic control gear

## Main technical options

Thanks to the special construction of the luminaire no gear tray is necessary. The electrical components are mounted directly into the housing in order of cost optimisation. This luminaire represents the cheapest solution for your waterproof lighting with that.



The luminaire can be mounted quickly with easy-to-install suspension brackets onto the ceiling.



Transparent housing for brighter illumination of the ceiling



Fixing of the diffuser to the body: with unique clipless solution

UV-resistant polypropylene diffuser

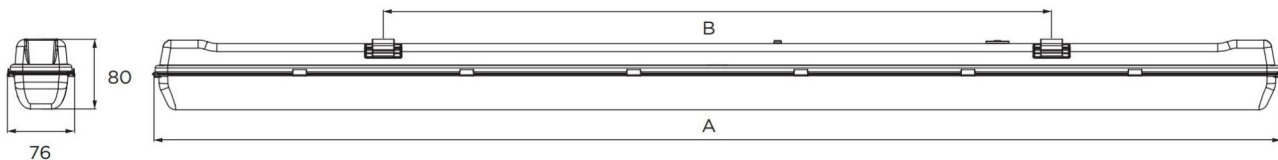
**742-TRANSPARENT**

## Technical Data

Type	Tube/Lampholder	Power (W)	Dimensions (mm) A	Dimensions (mm) B	Weight (kg)
<b>With B2 magnetic ballast for T8 fluorescent tubes, version without gear tray</b>					
742 136 IND	T8/G13	1 x 36	1 275	752	1,39
<b>With electronic control gear for T8 fluorescent tubes, version without gear tray</b>					
742 136 EVG	T8/G13	1 x 36	1 275	752	0,854

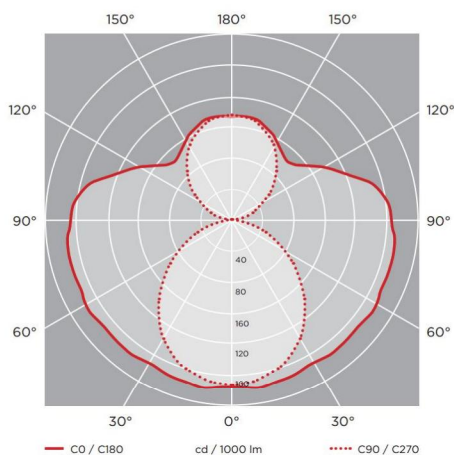


## Schematic drawing with main dimensions



## Photometric curves:

742-Transparent 1x36



### Further options:

- LED-tube
- halogen-free wiring